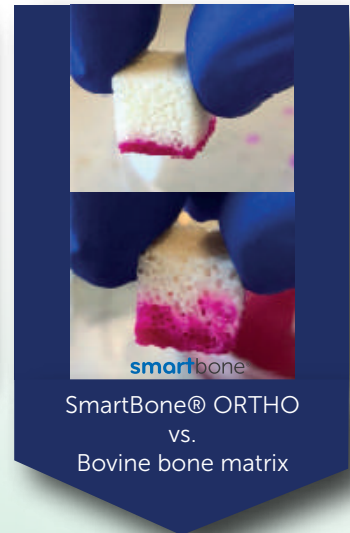
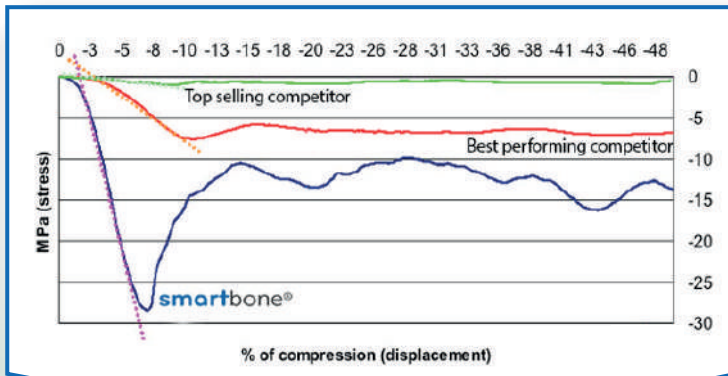


Open and interconnected porosity



SmartBone® ORTHO vs. Bovine bone matrix

**HIGH MECHANICAL PERFORMANCES**

**RESEMBLES THE HUMAN BONE**

**HIGH HYDROPHILICITY  
HIGH TISSUE INTEGRATION**



**COMPOSITION**

A bovine mineral bone matrix with bioactive resorbable polymers and collagen fragments

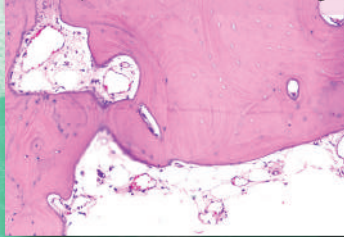
**smartbone®  
ORTHO**

- FAST INTEGRATION AND COMPLETE REMODELLING •
- PROMOTES CELLS ADHESION AND PROLIFERATION •
- REDUCING THE NEEDS OF AUTOLOGOUS BONE •
- HIGH WETTABILITY AND HYDROPHILICITY •
  - HIGH VOLUMETRIC STABILITY •
  - HIGH MECHANICAL RESISTANCE •



Follow-up 2 years

Totally resorbed and replaced by the patient's own bone within 1-2 years, thanks to complete remodelling



**REFERENCES**

Boffano M. - Journal of Clinical Medicine 2020, 9, 1388  
 Cingolani A. - Current Pharmaceutical Biotechnology, 2018,19, 1005-1013  
 Conti A. - TJBJS Case Connect 2020;10  
 Ferracini R. - Appl. Sci. 2019, 9(13), 2675  
 Ferracini R. - Materials 2020, 13, 4040  
 Grottolì C. F. - Journal of Functional Biomaterials 2019, 10, 53

**MORE PUBLICATIONS AT:**



Impressive bone formation: follow-up 1 year

